

INSTALLATION GUIDE



Coolant Filter Kit

2003–2007 Ford 6.0L Powerstroke





DISCLAIMER

1) By installing this product onto your vehicle, you assume all risk and liability associated with its use.

2) It is your responsibility to make sure your vehicle complies with all federal, state, and local emissions laws. Federal and many state and local laws prohibit the removal, modification or rendering inoperative of any part of the design affecting emissions or safety on motor vehicles used on a public street or highway. Violation may result in a fine of up to \$32,500 per vehicle (or possibly higher depending on changes in the law). All civil penalties and fines for removing your vehicle's emissions equipment are the sole responsibility of the end user.

3) Due to its high performance nature, this product may void vehicle manufacturer's warranty.

4) Sinister Mfg Company, Inc. is not responsible for misuse of its products. By installing this product, you release Sinister Mfg Company, Inc. of any and all liability associated with its use.

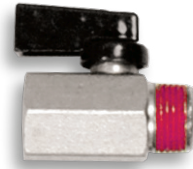
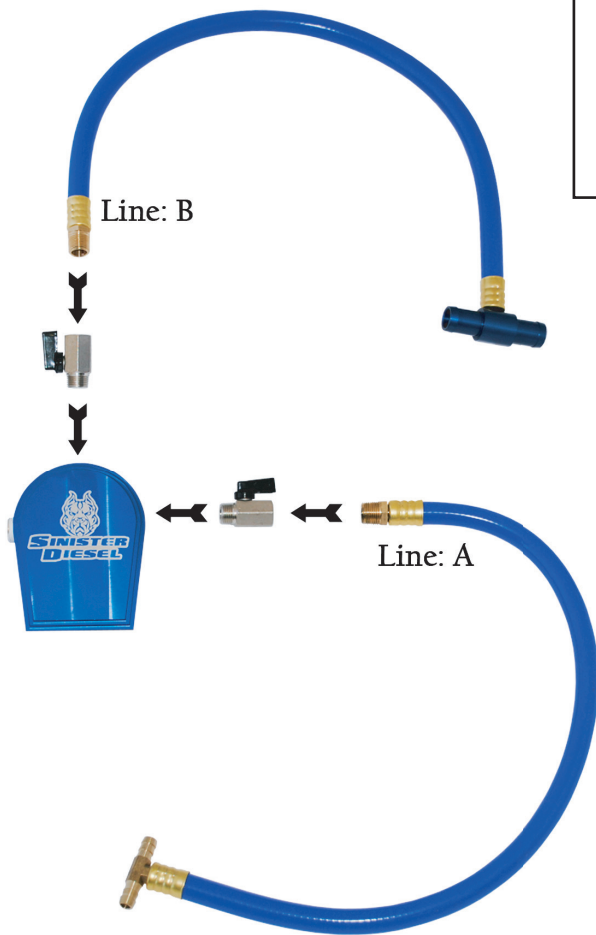
5) Depending on where you live, restrictions may apply. Check all applicable laws before installing or using!

6) The purchaser and end user releases, indemnifies, discharges and holds harmless Sinister Mfg Company, Inc. from any and all claims, damages, causes of action, injuries, or expenses resulting from or relating to the use or installation of this product that is in violation of the terms and conditions on this page, the product disclaimer, and/or the product installation instructions. Sinister Mfg Company, Inc. will not be liable for any direct, indirect, consequential, punitive, statutory, or incidental damages or fines caused by the use or installation of this product.



PART:	DESCRIPTION:	QTY:
A	Coolant Line A	1
B	Coolant Line B	1
C	Coolant Filter Bracket	1
D	Coolant Filter	1
E	Sinister Filter Block	1
F	3/8 - 16 Bolts	2
G	3/8 Washers	2
H	3/8" NPT Ball Valves	2
I	Large Hose Clamps	2
J	Small Hose Clamps	2

IMPORTANT: READ ALL INSTRUCTIONS PRIOR TO INSTALL. Prior to installation, please compare the parts that you have received with the bill of materials provided on this page to assure that you have all the parts necessary for the installation.



NOTE: The fittings that have a orange sealant compound on the threads do not need thread seal tape.

COOLANT LINE ASSEMBLY DIAGRAM:

- Attach the ball valves to the coolant lines.
- Attach the line that has the smaller brass "T" fitting (Line A) into the port on the side of the block.
- Attach the line that has the larger blue "T" fitting (Line B) into the top port of the block.



CAUTION !!! Never work on a hot vehicle. Serious injury in the form of burns can result if the vehicle has been in use. Allow vehicle to cool prior to installation. Always wear eye protection when working on or under any vehicle.

IMPORTANT: Installation of the Sinister Diesel Coolant Filter Kit requires cutting of the coolant lines, resulting in coolant loss. Due to the coolant loss, we suggest draining and flushing the entire system at this time.

1 Install filter block, with lines, onto provided bracket.

2 Standing in front of the vehicle, the coolant filter will be mounted on the left side of the radiator (passenger side). (Image 1)

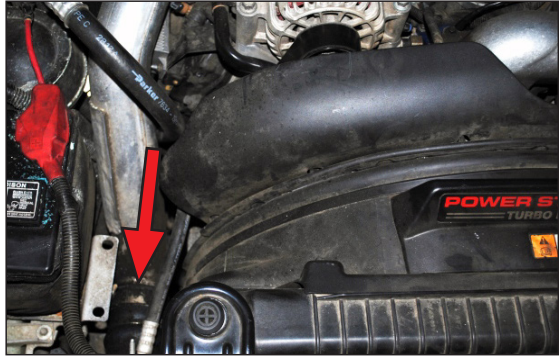


IMAGE 1

3 Remove the nut stud with a 10mm deep socket. (Positive battery cable retainer may need to be removed to gain access). (Image 2)



IMAGE 2

4 Insert stud through the face of the coolant filter bracket and bolt unit on. (Image 3)

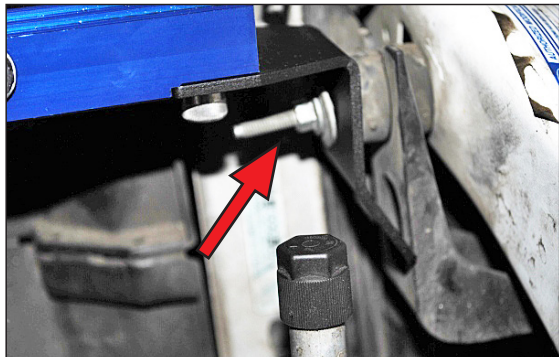


IMAGE 3

Note: Make sure to insert tab on the bottom of the bracket into the cut out.

5 Route hose on right hand side of the filter system across radiator shroud to the upper radiator bleed line, "overflow." Splice brass "T" into line and secure with provided small clamps. (Image 4)



IMAGE 4

6 Route hose from top of filter block over aluminum charge pipe and around the engine oil fill tube. Splice aluminum "T" into heater core line and secure with the provide large hose clamps. If your vehicle is equipped with a heater valve in the heater hose, you need to tee into the motor side of the valve. (Image 5)



IMAGE 5

7 Lubricate the o-ring on the coolant filter with a petroleum based lubricant. Install the filter, hand tight, onto the filter block. (Image 6)

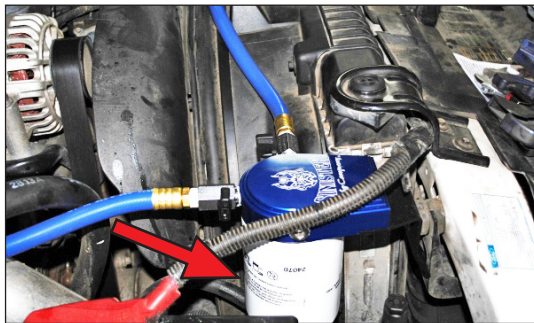


IMAGE 6

Installation of your Sinister Diesel Coolant Filter is now complete.



SD-COOLFIL-6.0-W

2017



#1 IN PERFORMANCE PARTS & KITS

2025 OPPORTUNITY DR. ROSEVILLE, CA 95678 SINISTERDIESEL.COM 888.966.6543